



KALMATRON KF-K

KALMATRON® KF-K is an admixture to conventional concrete mixes used to quickly prepare Patching Concrete with high viscosity, strong adhesion and without cracks. KALMATRON® KF-K, added as 10 Lbs/CY or 6 Kg/m³ increases resistance to abrasion and impermeability to any liquids, including purified oil and gasoline. Final Hardening Time (FDT) varies from 45 minutes to 3 hours, which depends on patch size, water amount and/or mixer speed.

- Prepare a regular concrete mix with sufficient amount of water to achieve targeted Final Hardening Time (FDT):

FDT of 45 minutes requires W/C = 0.375

FDT of 1 hour 30 minutes requires W/C = 0.395

FDT of 2 hours 15 minutes requires W/C = 0.405

FDT of 3 hours requires W/C = 0.417

- Add 10 Lbs/CY or 6 Kg/m³ of KALMATRON® KF-K into the mixer with 1 CY or 1 m³ of concrete mix or chosen mixing volume where KF-K must be added respectively.

- The minimal mixing amount of concrete must be no less than ¼ CY or ¼ m³.

- Mixing time is 3 minutes for conventional mixers and about 30 seconds for high speed blenders.

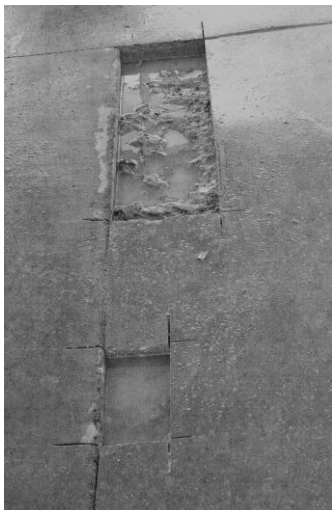
- Final mix will be viscous, sticky and moveable with good workability for application of concrete in place.

■ ESSENTIALS

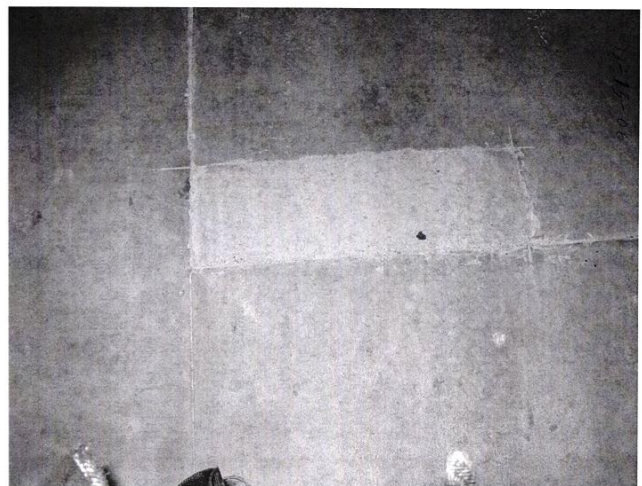
KF-K is designed for patching of the roads, runways, pavements and side walks, heavily trafficked industrial floors, manholes, gas stations, sewer tanks, i.e., localized repair jobs which need to be completed in the shortest amount of time. High adhesion, compressive strength, resistance to abrasion and freeze-thaw resistance, non-shrinking/dilatation performance with highest liquid impermeability proved KF-K as an ideal for concrete restoration by patches of the structures designed for unstable instable and harsh environments, such as cooling towers, oil tanks, aqueducts, foundations, pools, wells, and industrial buildings. Compared to other similar road patching materials, KF-K with lower cost of application provides a higher performance with simpler or no maintenance at all.



Add 1 Gallon of water per 50 LB bag of KF-K and mix thoroughly.



Cut out damaged concrete slab.



Solid patch after 4 hours